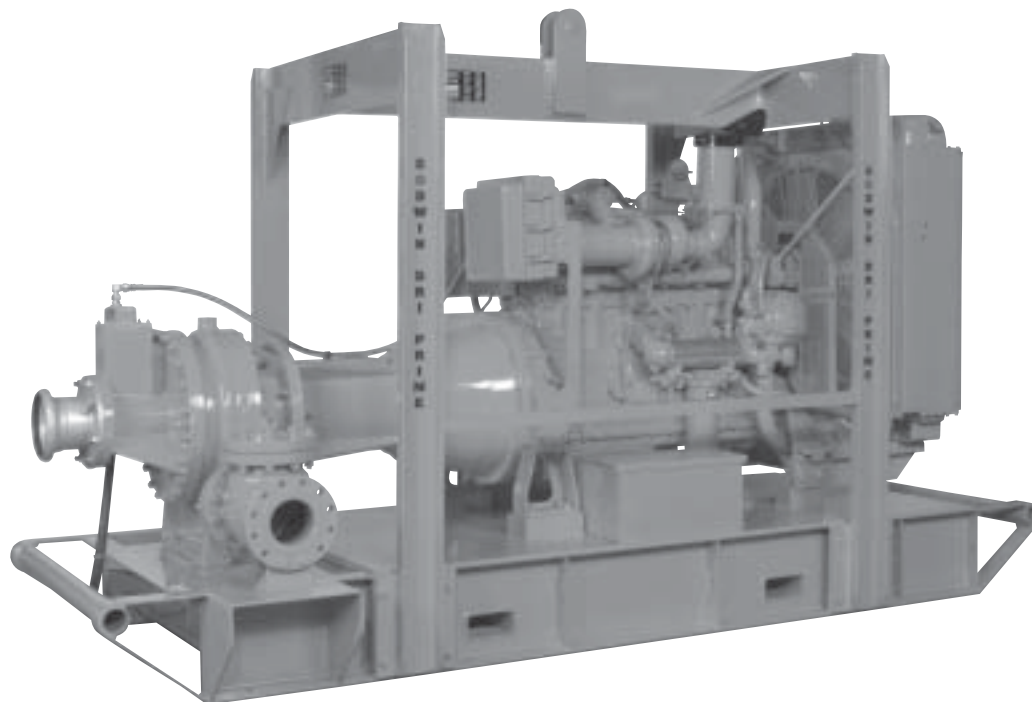


# HL160M Dri-Prime® Pumps

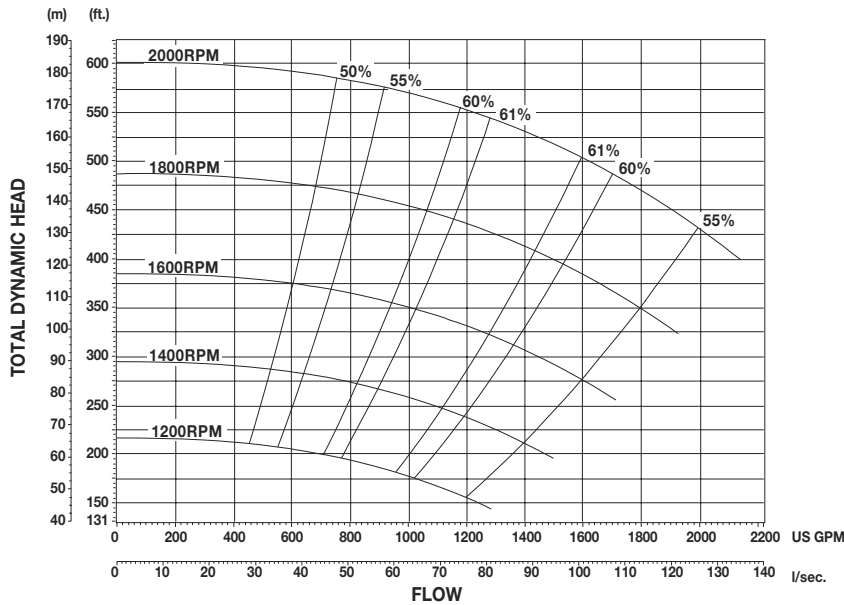


The Godwin Dri-Prime 8" x 6" (200mm x 150mm) HL160M is a heavy duty, fully automatic self-priming pump specifically offered for pumping under discharge pressure conditions or high discharge lift applications. The HL160M offers flowrates up to 2,000 gpm (126 l/sec.), total dynamic heads up to 600 feet (183M), and solids handling up to 1-3/8" (35mm) in diameter. Like all Godwin pumps, the HL160M includes the Dri-Prime air ejector priming system for fully automatic priming up to 28 feet (8.5M) of static suction lift.

## Features

- Fully automatic priming from dry to 28 feet (8.5M) of suction lift. Maximum heads to 600 feet (183M). Maximum flows to 2,000 gpm (126 l/sec.).
- Handles liquids with solids up to 1-3/8" (35mm) in diameter.
- Continuously operated venturi air ejector priming system operated by an air compressor requiring no form of periodic adjustment or operator intervention.
- Double, high pressure mechanical seal with high abrasion resistant silicon carbide interfaces. Oil bath immersion for dry running.
- Mounted to a structural steel skid with integral 250 gal. (946 liter) fuel tank and lifting bail.
- Standard engine — Caterpillar 3406C diesel. Other engines available. Electric drive version also available.

# HL160M Performance Curve



# HL160M Performance Table

**Diesel Set** — Caterpillar 3406C, 440 hp (328 kw) @ 2000 rpm  
**Impeller Diameter:** 20" (508 mm)

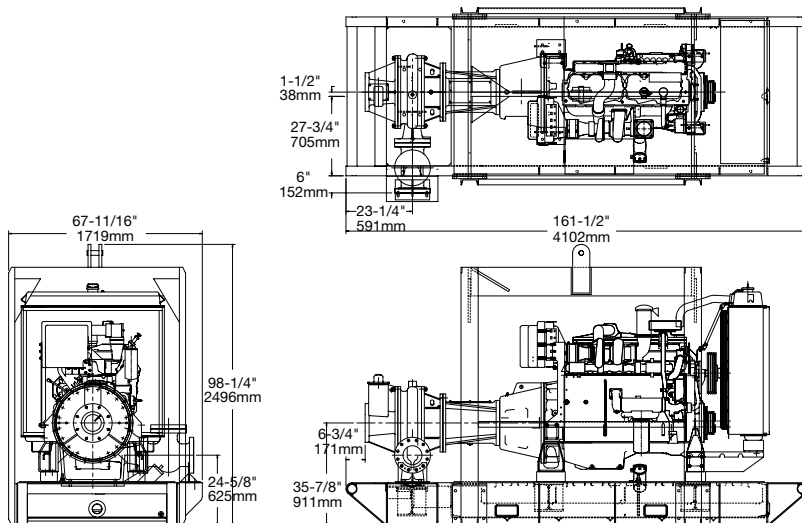
Total Delivery Head — Feet

Total Suction Head — Feet	450	500	550	575
	Output — GPM			
15	1740	1500	1160	840
20	1620	1400	1100	820
25	1450	1250	1020	800

Performance data listed in table and curves based on water test at sea level and 68° F (20° C). Maximum flows may require larger diameter pipes.

# Dimensions

HL160M — Caterpillar 3406C, Skid Base  
 Weight: 13,500 lbs. (6,109 kg.)



# Specifications

- Maximum Operating Speed:** 2000 rpm
- Maximum Operating Temperature:** 194° F (90° C)
- Maximum Working Pressure:** 285 psi (19.6 BAR)
- Maximum Suction Pressure:** 90 psi (6.2 BAR)
- Maximum Casing Pressure:** 425 psi (29.3 BAR)
- Fuel Tank Capacity:** 250 gal. (946 liters)
- Fuel Consumption:** 19.7 gph (74.6 lph)
- Pipe Connections:** Suction: 8" (200mm) ASA 150, Discharge: 6" (150mm) ASA 300
- Solids Handling:** 1-3/8" (35mm) dia.

# Materials

- Pump Casing and Bearing Casing:** Close grained cast iron
- Impeller:** Cast chromium steel
- Shaft:** Nickel chrome steel
- Wearplates:** Cast chromium iron
- Mechanical Seal:** Solid silicon carbide faced, oil bath lubricated



Aquatech has two facets to help you with your site specific needs.

For all your Rental and Sales needs call

**Aquatech Pump and Power**

Phone: 905-907-7852

Fax: 905-907-1701

For full "turn-key" contracting solutions call

**Aquatech Dewatering Company**

Phone: 905-907-1700

Fax: 905-907-1701

Email us: info@aquatd.com

69 Connie CrescentConcord, ON L4K 1L3

www.aquatd.ca

Dri-Prime® and the color orange for pumps are registered trademarks of Godwin Pumps of America, Inc.

Specifications and illustrations are subject to revision without notice.

© Copyright 2003-2005 Godwin Pumps of America, Inc.

GPASL.103.105